



COMPANY PROFILE

PROESA



The background of the slide is a photograph of an industrial plant, likely a refinery or chemical processing facility. The scene is dominated by tall distillation columns, complex piping, and metal scaffolding. The sky is a mix of orange and grey, suggesting a sunset or sunrise. The overall tone is industrial and professional.

 **WELCOME TO PROESA**
Specialized Processes and Projects

We are an experienced, committed and socially responsible company in constant transformation with the best certified labor in the country, endorsed under an ISO 9001:2015 Management System, ASME in the "U", "S" and "R" seal of NATIONAL BOARD.

We have the facilities to provide a complete range of industrial services. Total customer satisfaction is our greatest commitment; therefore, we develop products adapted to the highest quality standards, executed in the shortest time and at the best cost on the market, including:





SPECIALIZED EQUIPMENT

Roller

Capacity: Rolled Up to 3"
Plate width: 10 feet (3.05mts)
Minimum rolling: Ø 660 mm int.



DURMA Bending Machine HRB 4 Series

Plate bending machine with
4 symmetrical rollers
Opening and closing of the
side support by hydraulic piston



Bertsch Rolling Machine

Roll Capacity 14 x 8" long
Rolling capacity: 1 1/2" and 2"



Pantograph

400 Amp plasma cutting
Capacity: 2" plasma
Capacity: 3" flame cutting
3.05 meters. wide x 12.20 meters of long.



Geka Punching Shear

2-cylinder shear-punching machine
with 5 work stations.
Cutting capacity:
520x15 Blade length: 475 mm



Beka-Mak Band Saw

For straight cut
Maximum cutting capacity
at 90°: 850 mm



Auto SAW

The equipment for the assembly of:
Storage tanks, towers and furnaces
due to the Submerged Arc process



Vertical Automatic Cabins FCAW

Vertical Electro-Gas Shield Welding
(EGW), FCAW.
Bevel type: V type and Double V type



Overhead

With a capacity of 5, 20
and 30 tons



SAW

Supply capacity:
1000 amps
7m. height 6 m. of length



200 Electromechanical & 100 hydraulic jacks

For assembling tank rings
and making horizontal
or vertical welds.



Multi-process Boring and Cutting Machinery M&G

- Equipped with CNC NUM and touch screen
- Three-head system and CNC control
for drilling, tapping, marking,
countersinking, & profile operations.
- Drill up to 40mm in diameter

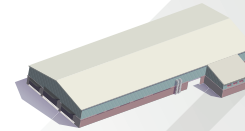


PROESA
PROCESOS ESPECIALIZADOS Y PROYECTOS
**SPECIALIZED
MACHINERY**



Capacity Distributed in 11 Automated Warehouses

Equipped with specialized tools



Total Surface: 52,285.00 m²

- **Shops :14,430 m²**
- **Offices: 1,382.00 m²**



SHOP 1

Manufacture of platforms, railings and gratings

SURFACE: 1,014 M²



SHOP 2

Manufacture and Rolling of API Tanks

SURFACE: 468M²



SHOP 3

Manufacture of Heat Exchangers and Equipment of stainless

SURFACE: 768 M²



SHOP 4

Cutting, Enabling and Rolling for API Type Tanks

SURFACE: 1,344 M²



SHOP 5

Manufacture of pressure vessels

SURFACE: 1,536 M²



SHOP 6

Manufacture of pressure vessels and process towers

SURFACE: 2,400 M²



SHOP 7

Boilers, Furnaces, HRCG, Vessels and medium equipment

SURFACE: 2,400 M²



SHOP 8

Boilers, Furnaces, HRCG, Vessels and medium equipment

SURFACE: 2,400 M²



SHOP 9

Sandblasting & Painting

SURFACE: 1,100 M²

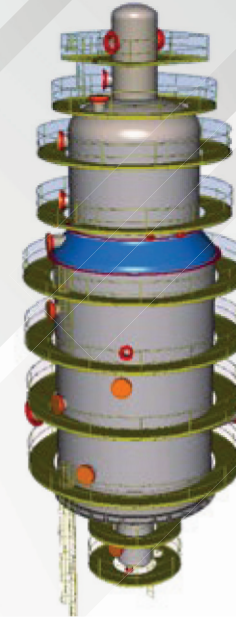
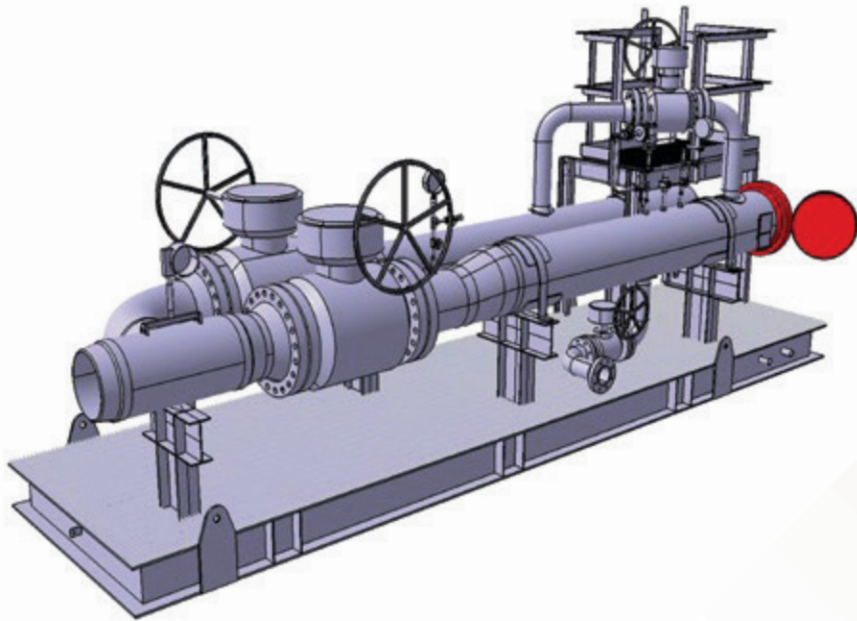


3 SHOPS

Painting

SURFACE: 1,100 M²

PREFABRICATION



With the help of our experienced team of collaborators, each project is evaluated and comprehensive solutions are developed. With the engineering department we adhere to current manufacturing standards and have state-of-the-art software, which aims to ensure that the project receives the attention it deserves.

- Analysis and design of the project
- Partnership with technology according to the type of project
- Detail engineering
- Analysis and cost re-animation
- Supply of materials and machinery
- Construction and logistics

FABRICATION

We have a wide range to develop activities that are of the greatest importance in this sector. Through our experience and trajectory we forge the ability to handle the necessary equipment that allows us to install each of the projects.



FABRICATION PROCESS

Through the operations we ensure that all the pieces are properly fit-up to meet the needs of the project and our client.



MISCELANEOUS

We have the experience in fabrication and erection of several kinds of steel for the projects., including:

- Packaging connections.
- Divisions for welding
- Items to screw
- Parts for connections
- Valves
- Segments for splicing
- Articles for forging
- Locks
- Handles



PROJECTS



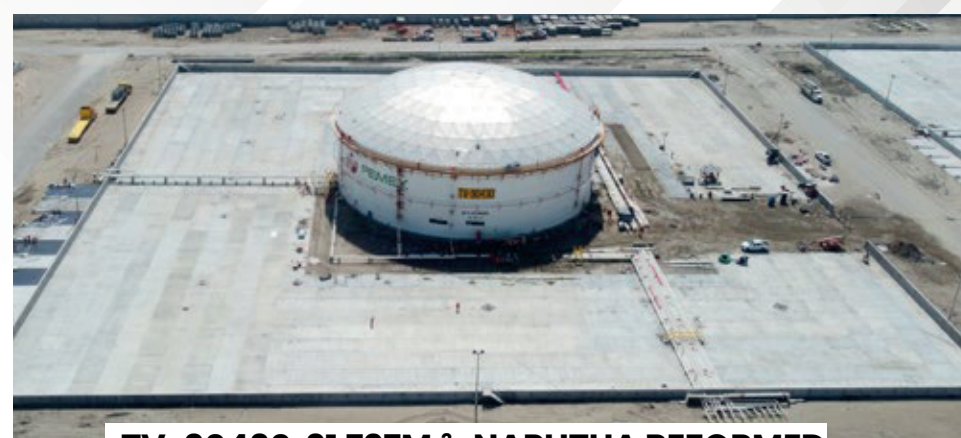
TV-90241 31,797M³ DIESEL UBA



TV-90242 31,797M³ DIESEL UBA



TV-90243

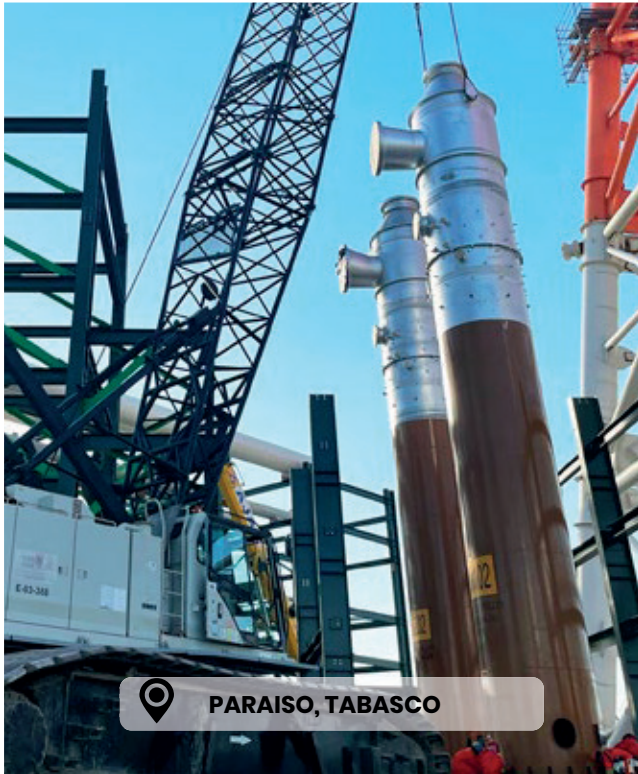


TV-90430 31,797M³ NAPHTHA REFORMED

MANUFACTURE OF 200MBLS STORAGE TANKS

**TANK
API 650
200MBLS**

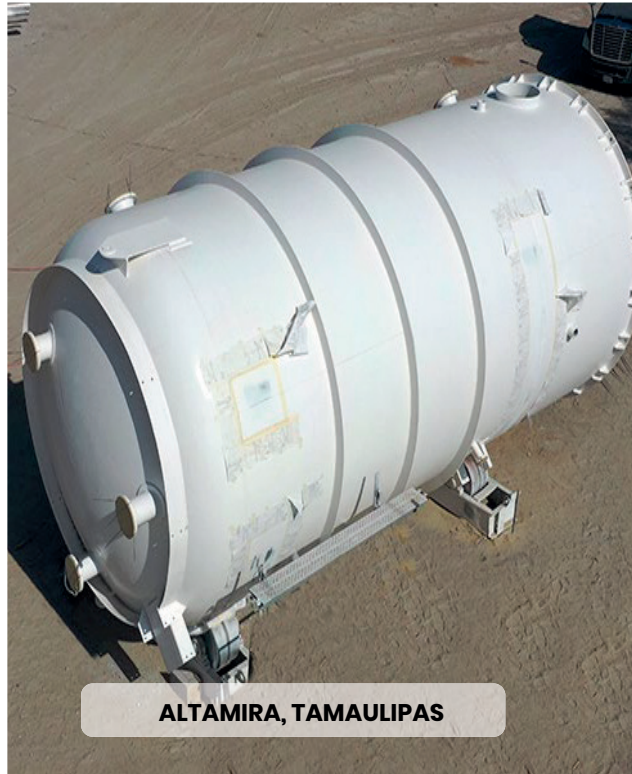
YEAR	2021
MANUFACTURED EQUIPMENT	4 Storage Tanks of 200MBLS
MATERIAL	A-283-C, A-36, A-53, A-105 y A-234-WPB
FABRICATION CODE	API-650
DESCRIPCIÓN DEL PROYECTO	Labor and equipment, helical ladder assembly, welding on perimeter platform, coating on upper railings, assembly and welding of nozzles, interior pipes, assembly of aluminum domes, PND's.



PARAISO, TABASCO

**LIQUID SEAL TANKS
ZEECO-THERME**

YEAR	2022
EQUIPMENTS	3
DIAMETER	2.4 MTS
LENGTH	19.9 Mts
MATERIAL	SA-516-60 N KILLED+HIC (3 CICLES)
WEIGHT	24.5 TONS
PROYECT DESCRIPTION	Supply, Manufacture, Inspection, Testing and Installation of Risers, Liquid Seal Tanks, and Interconnecting Piping



ALTAMIRA, TAMAULIPAS

**COAL BEDS VESSEL
ZEECO-THERME**

YEAR	2021
EQUIPMENTS	3 EQUIPOS
DIAMETER	3657.6 mm (Ø12')
LENGTH	4876.8 (16')
MATERIAL	CARBON STEEL SA-516-70, SA-36, SA-106 B Y A-516-70
FABRICATION CODE	ASME SECC. VIII, DIV. 1 ED. 2019
PROYECT DESCRIPTION	Design, Material Supply, Fabrication, Inspection, Cleaning, Testing and ASME Stamping.



JIUTEPEC, MORELOS

**AIR LUNG TANK
DIPROMI**

YEAR	2020
CUSTOMER	DIPROMI
VOLUMEN	1,520 LITERS
DIAMETER	762 mm
MATERIAL	SA-240-3095/SA-240-3095
FABRICATION CODE	ASME SECC. VIII ED.2019



📍 Coatzacoalcos, Veracruz.

COLUMN D-115 ETHYLENE OXIDE PLANT
CHEM ISA S.A. DE C.V.

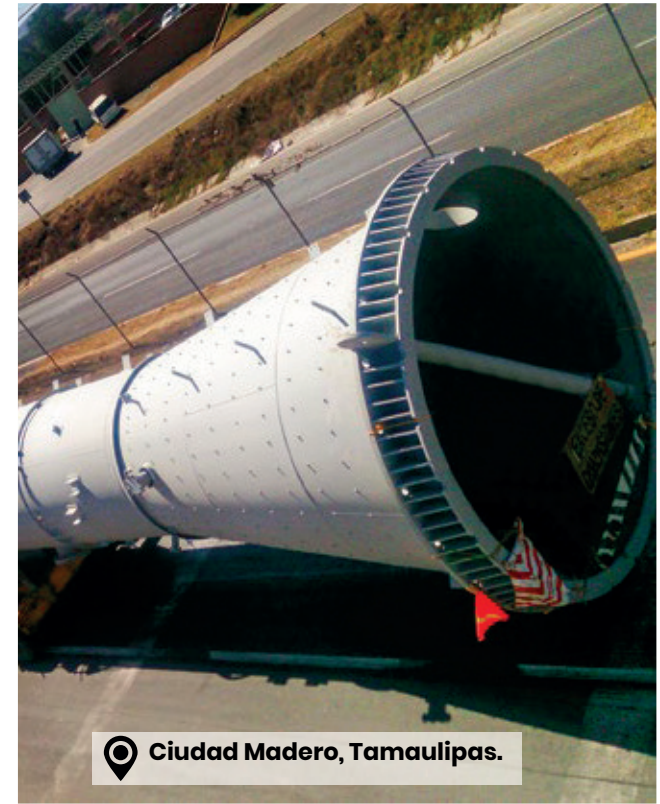
YEAR	2012
MANUFACTURED EQUIPMENT	1
DIAMETER	5,290 mm
HEIGHT	30,000 mm
WEIGHT	201,305 kg
MATERIAL	SA-264 (SA-516-70 +SA-240-304)
FABRICATION CODE	ASME Secc. VIII Div. 1



📍 Ing. Héctor Lara Sosa Refinery, Cadereyta, Nuevo León.

DEBUTANIZATION TOWER DA-203
PEMEX

YEAR	2014
MANUFACTURED EQUIPMENT	1
DIÁMETRO	3,800 mm
HEIGHT	34,130 mm
WEIGHT	125,548 kg
MATERIAL	SA-516-70
FABRICATION CODE	ASME Secc. VIII Div. 1



📍 Ciudad Madero, Tamaulipas.

EXHAUSTING TOWER OF BITTER WATER DA-3002
PEMEX REFINACIÓN

YEAR	2014
MANUFACTURED EQUIPMENT	1
DIÁMETRO	2,280 mm
HEIGHT	33,600 mm
WEIGHT	56,390 kg
MATERIAL	SA-516-70N+HIC
FABRICATION CODE	API-6 ASME Secc. VIII Div. 1 50
INTERNAL	Exhausting plates of Stainless Steel SA-240-304L SULZER



📍 **Marabis Industrial Park, Guanajuato.**

AISIN PLANT METAL STRUCTURE
FUJITA CORPORATION

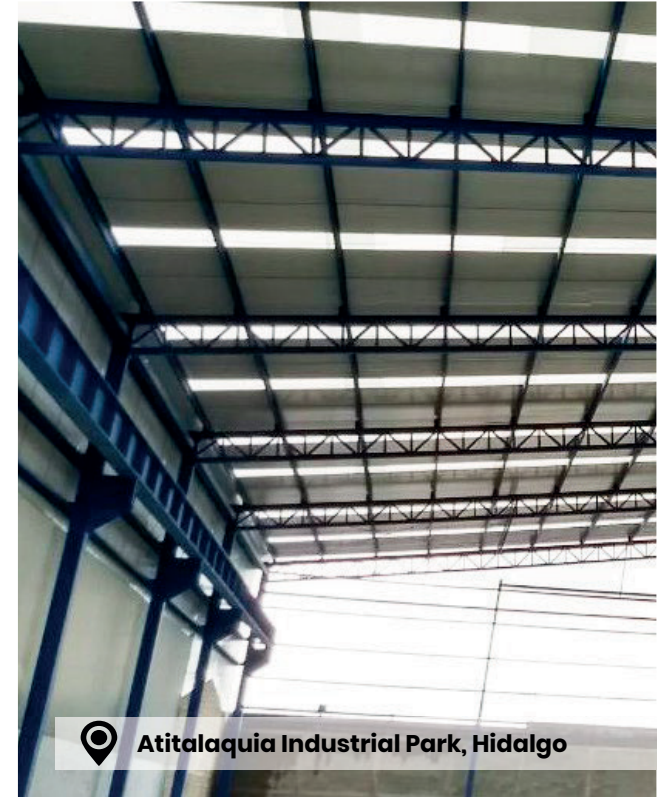
YEAR	2016
MANUFACTURED EQUIPMENT	Estructura metálica principal. Estructura metálica para varios pasillos.
VOLUMEN	800 Tons.



📍 **El Salto, Hidalgo.**

SEWAGE WATER TREATMENT PLANT
ATVM/ÁREA 800 DE COGENERACIÓN

YEAR	2013 - 2015
MANUFACTURED EQUIPMENT	7
LENGTH	450,00 mm
HEIGHT	9,000 mm a 11,300 mm
FABRICATION CODE	AWS. D1.1



📍 **Atitalaquia Industrial Park, Hidalgo**

VALBA GROUP
GRUPO VALBA

PROJECT DESCRIPTION	The project has an extension of 5000m2, approximately. The project includes stripping, topography, movement and improvement of land and buried systems.
----------------------------	---



📍 Ing. Héctor R. Lara Sosa Refinery Cadereyta, Nuevo León

MANUFACTURE OF SHELL FOR HEAT EXCHANGER

INGENIAGAS

YEAR	2019
CUSTOMER	INGENIAGAS
TYPE	"U"
LENGTH	6.63 Mts.
DIAMETER	.889 mm
TOTAL WEIGHT	5,488 kg
MATERIAL	SA-516-70
FABRICATION CODE	ASME SECC. VIII DIV. I



📍 Ciudad Madero, Tamaulipas.

LAYOUT OF REBOILER TUBES
E-22-CD PEMEX T RA NS FOR MACI ÓN
 IND UST RIAL

YEAR	2018
CUSTOMER	PEMEX Transformación Industrial
TYPE	"U"
LENGTH	10,951 mm
DIAMETER	1,088 mm
TOTAL WEIGHT	14,510 kg
MATERIAL	SA-285-C
FABRICATION CODE	ASME SECC. VII DIV. I y 9na. EDICIÓN



📍 Ciudad Madero, Tamaulipas.

DEPROPANIZING TOWER CONDENSER
PEMEX TRANSFORMACIÓN INDUSTRIAL

YEAR	2018
CUSTOMER	PEMEX Transformación Industrial
TYPE	AES
LENGTH	6.2 mts
DIAMETER	0.66 m X 0.76 mm
TOTAL WEIGHT	14.7 Tons.
MATERIAL	SA-285-C
FABRICATION CODE	ASME SECC. VII DIV. I y 9na. EDICIÓN

FUTURE GENERATIONS

We promote personal growth and empower employees.
With constant training and daily on-site practice, we develop leaders.





SAFETY

For each of our projects this is a primary factor, the goal of each day is all the staff return to home without any exception. Therefore, our security plan includes:

- Security requirements of our facilities
- Customer's specific security requirements
- Flow of vehicles and machinery
- Pedestrian and vehicle security
- Assembly inspection, work and installation details
- Daily EPP inspection of the staff.

 PROESA

PROCESOS ESPECIALIZADOS Y PROYECTOS

 BUILDING WITH FAMILY ROOTS

WHAT BEGAN AS A SMALL SUBCONTRACTING BUSINESS
HAS BECOME A NATIONALLY RECOGNISED CONSTRUCTION
COMPANY THAT SERVES BOTH NATIONAL AND
INTERNATIONAL CUSTOMERS.

WE PUT QUALITY FIRST, WE MEET THE SCHEDULES AND
WORK WITH A HUMAN SENSE.

PROESA

PROCESOS ESPECIALIZADOS Y PROYECTOS



Empresa Socialmente Responsable



East 4 Lt 47 Atitalaquia Industrial Park, Hgo. C.P. 42970
comercializacion@proesamx.com & negocios@proesamx.com

www.proesamx.com

Contact: 778 738 05 30 y 778 738 05 08 Ext. 121

Ing. Omar Patiño Ramírez
Lic. Luz Elena Rivero Ramos

773 116 2356
773 139 6476