



**GENERAL BROCHURE**

**GCI STRENGTH FOR OUR CLIENTS**

# OUR COMMITMENT

We are a 100% Mexican and socially responsible company that operates throughout the country and offers specialized services in the structuring, management and execution of works for the Oil and Gas, Electrical, Clean Energy, Petrochemical, Food, Pharmaceutical, Infrastructure and Mining sectors.

## MISSION

We are a company that provides specialized services of excellence in the structuring, management and execution of works directed to the exploration and production of gas and hydrocarbons, petrochemical and energy sectors, guaranteeing the successful completion of projects under high quality standards, contributing to sustainable development and total customer satisfaction.

## VISION

To be the leading company in the hydrocarbon sector at a national level, recognized for the excellent quality of our products and services, contributing to the development of the industrial sector through a qualified professionalism, highly efficient and dynamic experience, offering our clients guarantees of success and high profitability.

## POLICY

In GCI Oil & Gas we are committed to meeting the quality requirements of our customers, establishing a culture of highly efficient operation and a sense of responsibility in all our operations seeking continuous improvement of processes and the participation of highly qualified employees.





# INSURED WARRANTY

## QUALITY ASSURANCE AND CONTROL



We acknowledge that the effectiveness in the execution of inspections depends to a great extent on the knowledge, skills and experience of the personnel that performs them, for this reason, the training of our collaborators is very important to us.

In our work team we have highly qualified personnel in the following specialties:

- CWI Welding Inspector
- CAWI Welding Inspector
- Certified Inspectors in Penetrating Liquids
- Tightness Inspection by ASNT (Certified Level III)
- Hydrostatic, Pneumatic and FAT Testing

For our organization, the validity of our processes, in addition to the contractual requirements are completed with national and international standards.



---

# STRENGTH OF OUR PROJECTS

In GCI we have an engineering department for the development of our 3D parametric models and shop drawings or manufacturing, we work with Bim Tekla Structures software, software used nationally and internationally, thereby ensuring greater productivity, profitability, accuracy and quality in each and every one of our projects.

One of our strengths is our specialized engineers with extensive experience in the development of large and complex projects, all models and shop drawings go through a strict review process in order to avoid errors in subsequent processes.

We have important alliances for the elaboration of structural calculations such as Epesa, IMP, and other leading companies in the design field.





# CAREER

## WHAT WE HAVE DONE, DO AND WILL DO

We have executed projects of great magnitude focused on the energy sector, complying with Mexican and American standards regarding the manufacture of metallic structure and composition of structural materials.

We currently perform workshop engineering for the fabrication of metallic structure of the Mexican refineries, for process structures and piping support, we have highly trained personnel to meet the challenges that the steel construction industry demands; we continuously study the market to be at the forefront.

We will increase our capacity as an engineering department by training more personnel and taking the knowledge of the young people who have recently joined us to complement it with the experienced engineers of the department, this is how we achieve a solid base for the execution of our projects, technology is advancing day by day and we will evaluate the integration of artificial intelligence in our processes to achieve greater efficiency.



---

# WE BUILD WITH RELIABILITY AND COMMITMENT

At GCI we distinguish ourselves for having a robust financial infrastructure, which allows us to handle projects of any size with total solvency and security. In addition to our financial strength, we have a highly qualified team, specialized transportation, experienced labor and competent administrative personnel, all backed by ample physical space suitable for the management and development of works. We are equipped with the necessary tools and resources to ensure that each project is executed with maximum efficiency and quality, complying with the highest industry standards.





# OUR SPECIALTIES



EPC



OFFSHORE PLATFORMS



FURNACES



METALLIC STRUCTURE



POWER PLANTS



CHIMNEYS



INDUSTRIAL  
REHABILITATIONS



HSRG



INDUSTRIAL  
MAINTENANCE



BOILERS AND  
BLOWERS

We work in the main projects in Mexico hand in hand with the best companies at a national and international level.





# ALIANZAS

## ENGINEERING



## MACHINERY



## CONSTRUCTION



# OUR COMMITMENT TO THE NEXT GENERATIONS

At GCI we are highly committed to the future generations of dedicated and hardworking people of our great country, Mexico. That is why we provide all the support and joined the challenge of forming quality human beings who struggle and strive to be better every day.

We have agreements with the following academic institutions:





# ONGOING STAFF TRAINING

## SCHOOL OF WELDING AND FITUP

Grupo Constructor Industrial has 2 training schools for the formation of welders in which the workers receive constant training in:

- **WELDING AREA**

Training course in a group of 10 people in 2 schedules with a duration of 120 hours.

- **FITUP AREA**

Training course in a group of 10 people in 2 schedules with a duration of 120 hours.







**TOTAL: 32 SHOPS / 60 ACRES**  
**ROOFED SURFACE: 105,755 m<sup>2</sup>**

# SHOPS AND STRENGTHS FOR OUR CLIENTS





# HEADQUARTERS PLANT

TULA DE ALLENDE, HIDALGO

**22**  
**MANUFACTURING**  
**SHOPS**  
**AREA:**  
**77,000 m<sup>2</sup>**

**10**  
**PAINING**  
**SHOPS**  
**AREA:**  
**22,500 m<sup>2</sup>**

**SHIPMENT**  
**AREA:**  
**6,255 m<sup>2</sup>**



## PRODUCTION CAPACITY

**36,000 ANNUAL TONS OF STRUCTURE**

**1,300,000 ANNUAL DIAMETERAL INCHES**  
**IN PIPE WELDING**





# MOBILE WORKSHOP

Prefabrication of pipes in automatic and semi-automatic process for stainless steel, carbon steel, special material steels and carbon steel materials.

**5 WELDING  
SHOPS**

**AREA:  
77,000 m<sup>2</sup>**

**ORBITAL MACHINES: 2  
MACHINE PRODUCTION: 1,800 "DI WEEKLY**

**PRODUCTION CAPACITY**

**650,000 ANNUAL DIAMETERAL INCHES  
IN PIPE WELDING**



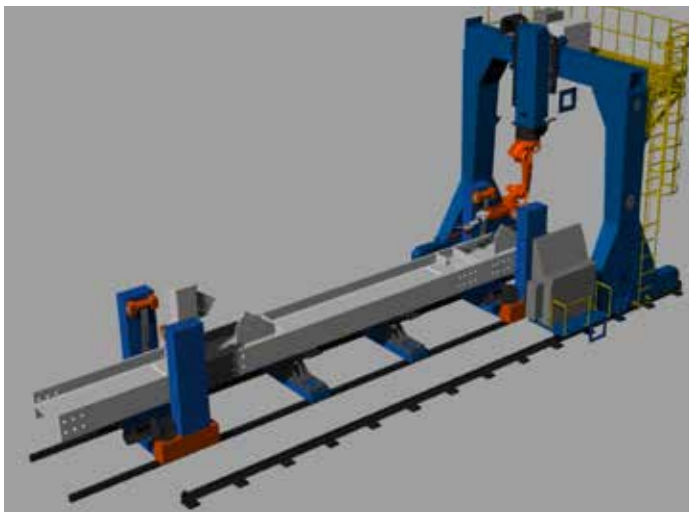




# MACHINERY AND EQUIPMENT



# INNOVATION FOR OUR CLIENTS



ROBOTIC WELDING STATION



IBER LASER CUTTING MACHINE WMT-T350



ROLLER SHOT BLASTING MACHINE



TX500EY/650 LATHE WITH SIEMENS 828D  
CONTROLLER



# MACHINERY AND EQUIPMENT

## SPECIFICATIONS

We have specialized lines for enabling, marking, drilling, cutting plates and profiles up to 3".







# LATEST PROJECTS





**MEETING BIG CHALLENGES  
IN DIFFICULT TIMES**

**DOS BOCAS**  
**OLMECA REFINERY**  
PARAISO, TABASCO



**WITH OUR EXPERIENCE, CAPACITY AND COMMITMENT,  
WE ACHIEVE GREAT RESULTS ALWAYS PRIORITIZING THE CLIENT AND THE PROJECT.**

| PROJECT NAME                       | CLIENT            | SCOPE   | STRUCTURE          |                 | PIPING           |                | EQUIPMENTS          |   |                          |
|------------------------------------|-------------------|---|--------------------|-----------------|------------------|----------------|---------------------|---|--------------------------|
|                                    |                   |   | FABRICATION (TONS) | ERECTION (TONS) | FABRICATION (DI) | ERECTION (LM)  | PUMPS / COMPRESSORS | MEASURING / FILTRATION / REGULATION SKIDS | TANKS / PRESSURE VESSELS |
| NAPHTHA HYDRODESULFURIZATION PLANT | Samsung           | ERECTION OF LIGHT, MEDIUM, HEAVY AND ULTRA-HEAVY STRUCTURE  |                    | 5,932           | 309,251          | 101,790        |                     |   |                          |
|                                    |                   | ERECTION OF STATIC, DYNAMIC EQUIPMENTS AND MODULES  |                    | 8,223           |                  |                |                     |   |                          |
|                                    |                   | SUBTOTAL HDN  |                    | 14,155          |                  |                |                     |   |                          |
| DIESEL HYDRODESULFURIZATION PLANT  | Samsung           | ERECTION OF LIGHT, MEDIUM, HEAVY AND ULTRA-HEAVY STRUCTURE  |                    | 6,472           | 318,270          | 114,660        |                     |   |                          |
|                                    |                   | ERECTION OF STATIC, DYNAMIC EQUIPMENTS AND MODULES  |                    | 12,258          |                  |                |                     |   |                          |
|                                    |                   | SUBTOTAL HDDI   |                    | 18,730          |                  |                |                     |   |                          |
| 500,000 BARRELS TANKS              | PEMEX PTI         | ENGINEERING, PROCUREMENT AND CONSTRUCTION OF TWO 500 MLB TANKS.   |                    | 4,051           | 150,864          | 24,137         |                     |   |                          |
| 200,000 BARRELS TANKS              | PEMEX PTI         | ENGINEERING, PROCUREMENT AND CONSTRUCTION OF FOUR 200 MLB TANKS.  |                    | 3,900           | 96,552           | 15,990         |                     |   |                          |
| 500,000 BARRELS TANKS              | IDINSA - Proyecta | ENGINEERING, PROCUREMENT AND CONSTRUCTION OF SIX 100 MLB TANKS.   |                    | 2,332           | 54,600           | 3,900          |                     |   |                          |
| PIPELINE BLOCK 1 (STORAGE)         | PTI - ICA         | PIPE FABRICATION AND INSTALLATION ON BLOCK 1  |                    | 10,021          | 312,242          | 237,640        |                     |   |                          |
| PIPELINE BLOCK 2 (PLANTS)          | PTI - ICA         | PIPE FABRICATION AND INSTALLATION ON BLOCK 2  |                    | 9,750           | 194,545          | 171,600        |                     |   |                          |
| PIPE INTEGRATION RACK              | IDINSA - Proyecta | PROCURA Y CONSTRUCCIÓN DE RACK DE INTEGRACIÓN.  |                    | 11,150          |                  |                |                     |   |                          |
| INTERCONNECTION BRIDGES            | IDINSA - Proyecta | ENGINEERING, PROCUREMENT AND CONSTRUCTION OF INTERCONNECTION BRIDGE.  |                    | 3,799           |                  |                |                     |   |                          |
| DERRICK TOWER                      | ICA FLUOR         | PROCUREMENT AND CONSTRUCTION OF DERRICK TOWER.  |                    | 2,972           |                  | 12,427         |                     |   |                          |
| LIQUID SEAL TANKS                  | Zeeco - Therme    | LIQUID SEAL TANK ENGINEERING, PROCUREMENT AND CONSTRUCTION  |                    | 96              |                  | 646            |                     |   |                          |
| FLARE STACK                        | Zeeco - Therme    | PROCUREMENT AND CONSTRUCTION OF FLARE STACK SYSTEM.   |                    | 2,031           |                  | 3,084          |                     |   |                          |
| PUMP HOUSES                        | PTI-ID            | ENGINEERING, PROCUREMENT, CONSTRUCTION AND OPERATIONAL TESTING OF 5 PUMP HOUSES.  |                    | 477             | 59,224           | 14,765         | 80                  |   |                          |
| STORAGE AND DELIVERY TERMINAL      | PTI-ID            | ENGINEERING, PROCUREMENT, CONSTRUCTION AND OPERATIONAL TESTING OF 5 PUMP HOUSES.  |                    | 928             | 13,046           | 6,310          | 9                   | 16  | 3                        |
| MEASURING SKIDS FOR END PRODUCTS   | PTI-ID            | ENGINEERING, PROCUREMENT, CONSTRUCTION AND OPERATIONAL TESTING OF 5 PUMP HOUSES.  |                    |                 | 10,655           | 2,884          |                     | 4   |                          |
| IN-LINE BLENDING                   | PTI-ID            | ENGINEERING, PROCUREMENT, CONSTRUCTION AND OPERATIONAL TESTING OF 5 PUMP HOUSES.  |                    |                 |                  | 1,248          |                     |   |                          |
| INSTRUMENT AND PLANT AIR           | PTI-ID            | ENGINEERING, PROCUREMENT, CONSTRUCTION AND COMMISSIONING OF COMPRESSOR SHED.  | 640                | 640             | 9,440            | 833            | 6                   |   | 6                        |
| INTEGRATION PIPELINE               | PTI-ID            | INTEGRATION PIPELINE IN BLOCK 1.  |                    |                 | 273,967          | 184,573        |                     |   |                          |
| GAS TREATMENT PLANT                | PTI-ID            | CONSTRUCTION OF GAS TREATMENT PLANT.  |                    |                 |                  |                |                     |   |                          |
| MAYA CRUDE OIL MEASURING SKIDS     | PTI-ID            | ENGINEERING, PROCUREMENT, CONSTRUCTION AND START-UP OF MAYA CRUDE OIL SKID.   |                    |                 | 167              | 300            |                     | 4   |                          |
| NATURAL GAS MEASURING SKIDS        | PTI-ID            | ENGINEERING, PROCUREMENT, CONSTRUCTION AND COMMISSIONING OF NATURAL GAS SKIDS.  |                    |                 | 1,163            | 401            |                     | 4   |                          |
| FUEL GAS SUPPLY                    | PTI-ID            | ENGINEERING, PROCUREMENT, CONSTRUCTION AND START-UP OF FUEL GAS PLANTS.   | 555                | 555             | 11,479           | 870            | 1                   |   | 5                        |
| POLYPROPYLENE AND LG FILLERS       | PTI-ID            | CONSTRUCTION OF PROPYLENE FILLERS.  | 89                 | 89              | 3,648            | 4,060          |                     |   |                          |
| SULFUR FILLERS                     | PTI-ID            | CONSTRUCTION OF SULFUR FILLERS.   | 145                | 145             | 5,361            | 117            |                     |   |                          |
| CONDENSATES PLANT                  | PTI-ID            | PIPING, ACCESSORIES AND SUPPORTS FOR ELECTRICAL AND INSTRUMENTATION WORKS, CONCRETE AND METALLIC SUPPORTS. PIPING ASSEMBLY. |                    |                 | 7,853            | 1,530          |                     |   |                          |
| <b>TOTAL VOLUME</b>                |                   |   | <b>1,429</b>       | <b>85,821</b>   | <b>1,832,327</b> | <b>903,764</b> | <b>96</b>           | <b>28</b>                                 | <b>14</b>                |





PARAISO, TABASCO

# INTEGRATION RACK

“OLMECA” REFINERY

CLIENT: IDINSA-PROYECTA

Supply, manufacturing, coating application and structure assembly.



**STRUCTURE:**  
**10, 532 TON**

**EXECUTION  
PERIOD:**  
**10 MONTHS**

The impossible is the first step towards the **extraordinary**





PARAISO, TABASCO

CLIENT: IDINSA-PROYECTA

We worked with **0 accidents**

## INTERCONNECTION BRIDGES

“OLMECA” REFINERY

Supply, fabrication and erection of metallic structure implemented to connect the storage area with the plant area.

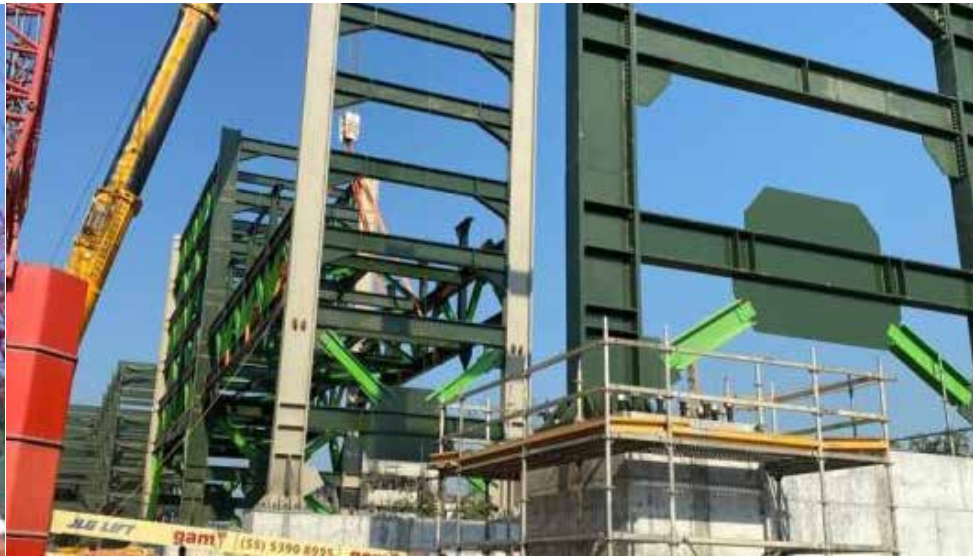
**STRUCTURE:**  
**3,598.5 TON**

**EXECUTION  
PERIOD:**  
**4 MONTHS**





# MANEUVERS





# ASSEMBLY





# DERRICK TOWER

## "OLMECA" REFINERY

Supply, fabrication and erection of metallic structure.

Installation of the tallest Derrick Tower in Latin America and considered the 4th tallest in the world by our technologists Zecco Therme.

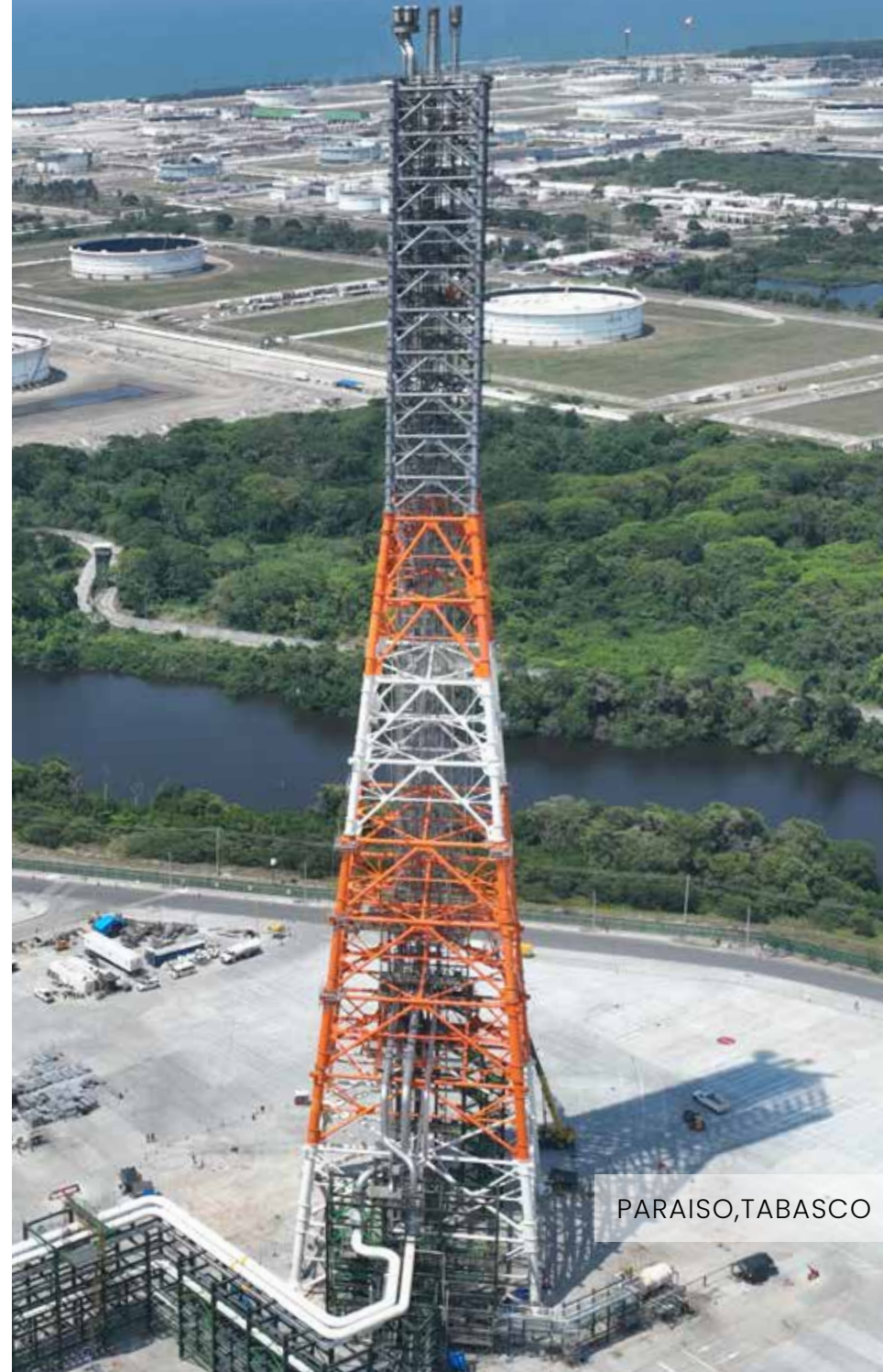
**STRUCTURE:**  
**2,322 TON**

**HEIGHT:**  
**200 M**  
**20 MODULES**

**EXECUTION PERIOD:**  
**6 MONTHS**

**125,000 Hh** with no fatalities or accidents.

**MORE THAN 40 LIFTS OF HIGH COMPLEXITY AND  
PRECISION WITHOUT FAIL!**

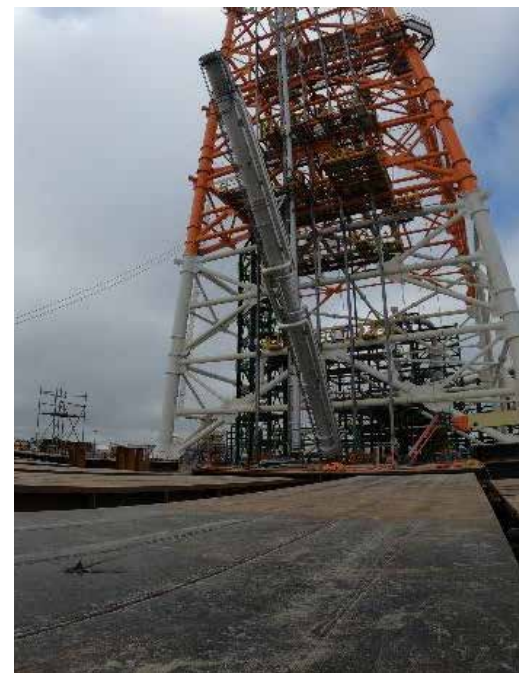


PARAISO, TABASCO





# ASSEMBLY





Quality, safety and adaptability  
are the foundations of our success

PARAISO, TABASCO

CLIENT: SAMSUNG

# HYDRODESULFURATION PLANT DIESEL – HDDI

“OLMECA” REFINERY

Manufacture of metal structure, assembly  
of mechanical and electrical equipment,  
installation of pipes, prefabricated and pipe  
installation.

**STRUCTURE:**  
8,197 TON

**MECHANICAL  
EQUIPMENT:**  
27,903 TON

**PIPELINE:**  
560,799 “DI







CLIENT: SAMSUNG

# HYDRODESULFURATION PLANT NAFTA - HDN

"OLMECA" REFINERY

Manufacture of metal structure, assembly of mechanical and electrical equipment, installation of pipes, prefabricated and pipe installation.

**STRUCTURE:**  
7,712 TON

**MECHANICAL  
EQUIPMENT:**  
22,164 TON

**PIPELINE:**  
508,938 "DI





# MANUFACTURING AND ASSEMBLY OF PIPE FOR PREMISES 1 AND 2

**MANUFACTURING  
AND ASSEMBLY:  
1,821 TONS**

**WELDING:  
354,207 "DI**

**LENGHT:  
280 KM**



PARAÍSO, TABASCO



# STORAGE AND DISTRIBUTION TERMINAL

"OLMECA" REFINERY

Detailed engineering, procurement, construction, testing and start-up of the Storage and Distribution Terminal at the Olmecca "Dos Bocas" Refinery.

**ASSEMBLY:**  
**9.4 KM**

**WELDING:**  
**20,966 "DI**

**STRUCTURE:**  
**928 TON**





PARAÍSO, TABASCO



# PUMP HOUSE

"OLMECA" REFINERY

CLIENT: PEMEX PTI-ICA

Pump House Integration Construction: CB-90001, CB-90002, CB-90003 CB-90004, Fire Pump House, In-Line Mixed Measuring Skids WBS-410.

**PIPING  
ASSEMBLY:  
14.9 KM**

**PIPE WELDING:  
65,867 "DI**

**MECHANICAL  
WORKS:  
281.8 TON**





PARAÍSO, TABASCO

CLIENT: PEMEX PTI-ID

# PROPYLENE AND LP FILLING SKID STATION

“OLMECA” REFINERY

Construction of propylene filling skid station.

STRUCTURE

**MANUFACTURING:**  
89 TON

**ASSEMBLY:**  
89 TON

PIPELINE

**MANUFACTURING:**  
3,648 PD

**ASSEMBLY:**  
4,060 ML





# SULFUR FILLING SKID STATION

"OLMECA" REFINERY

CLIENT: PEMEX PTI-ID

Construction of sulfur filling skid station.

## STRUCTURE

**MANUFACTURING:**  
145 TON

**ASSEMBLY:**  
145 TON

## PIPELINE

**MANUFACTURING:**  
5,361 PD

**ASSEMBLY:**  
117 ML



PARAÍSO, TABASCO

CLIENT: PEMEX PTI-ID

## FUEL GAS SUPPLY

### “OLMECA” REFINERY

Engineering, procurement, construction and start-up of fuel gas plant.

**ASSEMBLY:**  
555 ML

**MANUFACTURING:**  
11,479 PD

**STATIC  
EQUIPMENT:**  
5

**DINAMIC  
EQUIPMENT:**  
1





PARAÍSO, TABASCO



# MAYA CRUDE SKIDS

“OLMECA” REFINERY

CLIENT: PEMEX PTI-ID

Engineering, procurement, construction and start-up of the Maya crude oil skid

**ASSEMBLY:**  
300 ML

**MANUFACTURING:**  
167 "DI





PARAÍSO, TABASCO

CLIENT: PEMEX PTI-ID

# INSTRUMENT AND PLANT AIR

“OLMECA” REFINERY

Engineering, procurement, construction and commissioning of compressor sheds.

STRUCTURE

PIPELINE

**MANUFACTURING:**  
**89 TON**

**ASSEMBLY:**  
**89 TON**

**MANUFACTURING:**  
**3,648 PD**

**ASSEMBLY:**  
**4,060 ML**





# NATURAL GAS MEASURING SKIDS

“OLMECA” REFINERY

CLIENT: PEMEX PTI-ID

Engineering, procurement, construction and commissioning of natural gas skids.

**ASSEMBLY:**  
401 ML

**MANUFACTURING:**  
1,163 PD



PARAÍSO, TABASCO





# CONDENSATE PLANT

"OLMECA" REFINERY

CLIENT: PEMEX PTI- ID

Engineering, procurement, construction  
and commissioning of a condensate  
plant.

**ASSEMBLY:**  
**1,530 ML**

**MANUFACTURING:**  
**7,853 PD**



PARAÍSO, TABASCO

CLIENT: PEMEX PTI- ID

# NITROGEN STORAGE

"OLMECA" REFINERY

Engineering, procurement, construction and commissioning of a nitrogen plant.





# END-PRODUCT MEASURING SKIDS

"OLMECA" REFINERY

CLIENT: PEMEX PTI-ID

Engineering, procurement, construction and commissioning of 5 pump houses.

**ASSEMBLY:**  
2,884 ML

**MANUFACTURING:**  
10,655 "DI





# INTEGRATION PIPELINE

"OLMECA" REFINERY

CLIENT: PEMEX PTI-ID

**ASSEMBLY:**  
184,573 ML

**MANUFACTURING:**  
273,967 PD







# IN-LINE BLENDING

"OLMECA" REFINERY

CLIENT: PEMEX PTI- ID

Engineering, Procurement, Construction  
and Operational Testing of 5 pump  
houses

**ASSEMBLY:**  
**1,248 ML**



# GAS TREATMENT PLANT

"OLMECA" REFINERY

CLIENT: PEMEX PTI-ID

Construction of gas treatment plant







**“MIGUEL HIDALGO”  
REFINERY**  
TULA DE ALLENDE, HGO.





CLIENT: PEMEX REFINACION



## PIPE ASSEMBLY

"MIGUEL HIDALGO" REFINERY

Prefabrication, corrosion coating, installation and testing of carbon, alloy and stainless steel pipes and supports.

**TOTAL PIPING:  
224 MILOMETERS**



TULA DE ALLENDE, HGO.

CLIENTE: PEMEX REFINACIÓN

# AUXILIARY SERVICES

## “MIGUEL HIDALGO” REFINERY

Procurement of instruments, mechanical equipment, mechanical and preliminary works, signal integration and condensate pump procurement (WBS 850, 855 and 860).







TULA DE ALLENDE, HGO.



# NEW PLANTS STRUCTURE

“MIGUEL HIDALGO” REFINERY

CLIENT: ICA FLUOR

Development of complementary engineering, procurement of equipment and materials, construction, testing and start-up for the naphtha hydrodesulfurization, diesel hydrodesulfurization, hydrogen production, sour water treatment and amine regeneration plants, power supply and venting system.

**TOTAL STRUCTURE:  
10,000 TONS**





# COMBINED CYCLE POWER PLANT

SAN LUIS RIO COLORADO, SON.





# AIR CONDENSER ASSEMBLY

CLIENT: POWERTECNO ENERGIA MEXICANA S DE RL DE CV

**STRUCTURE AND  
EQUIPMENT:  
2,798 TON**

**WELDING:  
2,300 "DI  
6,759 ML**

Always **attentive** to the client's needs

SAN LUIS RIO COLORADO, SON





# ASSEMBLY OF PIPING AND MECHANICAL EQUIPMENT

SAN LUIS RIO COLORADO

CLIENT: POWERTECNO ENERGIA  
MEXICANA S DE RL DE CV

**STRUCTURE AND  
EQUIPMENT:  
811 TON**

**WELDING:  
36,332 "DI**







# **GAS OIL HYDRODESULFURIZATION PLANT**

SALINA CRUZ, OAX.





# METALLIC STRUCTURE

ANTONIO DOVALI JAIME REFINERY

CLIENT: ICA

Supply, fabrication and erection of metal structure (Plant 302 "gas oil hydrodesulfurization plant") for the waste utilization project.

**STRUCTURE:**  
**4,800 TON**

**IN PROCESS**



SALINA CRUZ, OAX





# IPC SPECIALTY



TAPACHULA, CHIAPAS

CLIENT: PEMEX

## STORAGE AND DISTRIBUTION TERMINAL (TAR)

Engineering, procurement, construction, testing and start-up, this TAR has a capacity of 65,000 barrels for distilled petroleum products.







CLIENT: PEMEX PETROQUÍMICA

## BITTER WATERS

MADERO, TAMAULIPAS



Engineering, procurement, construction, testing and start-up of the 10,000 BPD sour water treatment plant, as well as the procurement of equipment and materials and the construction of the plant's integrations at the Francisco I. Madero Refinery facilities.



COATZACOALCOS, VER.



# FIREFIGHTING SYSTEM FOR PETROCHEMICAL COMPLEX, CANGREJERA

CLIENT: PEMEX

Modification and Rehabilitation of the  
Fire Water Network of the Cangrejera  
Petrochemical Complex.





# NORTH CARDENAS BATTERIES

CLIENT: PEMEX

Engineering, procurement, construction and start-up of the processes of separation, stabilization, dehydration and desalting of crude oil; treatment and injection of congenital water for the Cárdenas Norte Battery.



# DE-GORGED RE-PUMPING STATION

CLIENT: PEMEX REFINACIÓN

Construction of intermediate pumping station (Degollado) for the 16" diameter polyduct.







CLIENT: PEMEX REFINACIÓN

# STEAM CONDENSING STATION EC 04

ING. ANTONIO M. AMOR REFINERY

Desarrollo de ingeniería, procura, construcción, integración, pruebas y puesta en servicio de la Estación de Condensación de Vapor EC 04 al instalarse en la Refinería  
Ing. Antonio M. Amor.







CLIENT: PEMEX PETROQUÍMICA

# UTE HIDRÓGENO CADEREYTA

ING. ANTONIO M. AMOR REFINERY



Engineering, procurement of equipment and materials, construction, testing, training, pre-start-up and performance testing for the new Hydrogen Generating Plant No.2, as well as the completion of the 12-inch diameter pipeline to transport high-pressure natural gas from El Ramal Ramones - Escobedo to the interior of the Héctor Lara Sosa Refinery.



# COMPLETION OF 12" GAS PIPELINE

FOR TRANSPORTING HIGH-PRESSURE NATURAL GAS

CLIENT: PEMEX REFINACIÓN

Engineering, procurement of equipment and materials, construction, testing, training, pre-start-up, start-up and performance testing for the completion of the 12" diameter pipeline to transport high-pressure natural gas from the Ramones-Scobedo branch to the interior of the Ing. Héctor Lara Sosa refinery, Cadereyta Jiménez, N.L.







# BERTRÁN LIMEKILNS

CLIENT: CALERAS BERTRÁN S.A. de C.V.

Engineering, manufacturing and assembly of a kiln with Mearz technology, for the production of industrial limes with a capacity of 600 TON per day.







TULA DE ALLENDE, HGO.



# HEATERS FOR THE CLEAN GASOLINE PLANT

TULA & SALAMANCA

CLIENT: PETROCHEM DEVELOPMENT

Supply, manufacture and installation of  
direct fired heaters H-11001 & H-11002.



TULA DE ALLENDE, HGO.

CLIENT: PEMEX

# CLEAN GASOLINE UNIT

## MIGUEL HIDALGO REFINERY

Prefabrication, anti-corrosion coating, installation and testing of carbon, alloy and stainless steel pipes and supports, area 110, 120, 130 and 320.





# CADEREYTA CATALYTIC INDUSTRIAL REHABILITATION AND MAINTENANCE

CLIENT: PEMEX

Engineering, procurement of equipment and materials, construction, testing, training, start-up preparations and performance tests for the adaptation of the flue gas system of Catalytic Plant No. 1.







# METALLIC STRUCTURE





# REFINERY RECONFIGURATION

LÁZARO CÁRDENAS DEL RÍO

**TYPE OF  
STRUCTURE:**  
COKING,  
AMINES, SULFUR,  
CATALYTIC  
PLANTS.

**STRUCTURE:**  
20, 000 TON

**YEAR:**  
2009

**DURATION:**  
3 Years





COATZACOALCOS, VER.

**CLIENT: BRASKEM IDESA**


## **ETILENO XXI**

**DURATION:**  
**5 MONTHS**

**STRUCTURE:**  
**3,500 TON**

Supply, fabrication, coating and erection of heavy and semi-heavy metal structures.





PUEBLA, PUEBLA.

CLIENT: IVER S.A. DE C.V.

## ENTERTAINMENT CENTER

Supply, fabrication and erection of metal structures.

**DURATION:**  
**10 MONTHS**

**STRUCTURE:**  
**1,109 TON**





YECAPIXTLA, MOR.

**CLIENT: ABENER ABENGOA**

## **COMBINED CYCLE PLANT**

**YEAR:**  
**2013**

**STRUCTURE:**  
**2,300 TON**

Type of Structure: Powerhouse,  
electrical room and building, pipe  
racks, operating platforms.



GUAYMAS, SON.



# COMBINED CYCLE PLANT

EMPALME I

CLIENT: OHL

**DURATION:**  
17 MONTHS

**YEAR:**  
2017

**STRUCTURE:**  
3,000 TON

**TYPE OF STRUCTURE:**  
POWER HOUSE, ELECTRICAL ROOM, PIPE  
RACKS, OPERATING PLATFORMS.



SANTA ROSALÍA, B.C.

CLIENT: ICA FLUOR DANIELS

# MINING

EL BOLEO

**YEAR:**  
2011

**STRUCTURE:**  
2,200 TON

**TYPE OF STRUCTURE:**  
PIPE RACKS, EQUIPMENT BUILDING  
STRUCTURE, PIPE SUPPORT.



# ASSEMBLY TLALNEPANTLA

EL BOLEO

CLIENT: GRUPO CARSO

Assembly and erection. Assembly service of the metallic superstructure (basement apartment A).

**DURATION:**  
3 MESES

**STRUCTURE:**  
2,767 TON

**TYPE OF STRUCTURE:**  
METAL  
SUBSTRUCTURE  
OF BASEMENT AND  
LIVING QUARTERS

**YEAR:**  
2017







MINATITLÁN, VER.


CLIENT: UOP

## REHABILITATION

### CCR UNIT

Supply, prefabrication, on-site installation works for the modernization of the CCR unit at the Minatitlán Refinery; civil works, structures, electrical works, instrumentation, piping, valves, equipment and insulation.





REFORMA, CHIAPAS

CLIENT: UTE ABENER ABEINSA NP TABASCO I

# COGENERATION PLANT

NUEVO PEMEX TABASCO

## TYPE OF STRUCTURE:

PIPING RACKS, ELECTRICAL AND MECHANICAL  
WORKSHOP, OPERATING PLATFORMS

YEAR:  
2012

STRUCTURE:  
960 TON



# SOLAR PLANT STRUCTURE

A-B UNITS

CLIENT: UTE ABENER ABEINSA NP TABASCO I

**DURATION:**  
3 MONTHS

**STRUCTURE:**  
1,600 TON

**TYPE OF STRUCTURE:**  
PIPE RACKS, STRUCTURE SUPPORTS STG,  
A&B PLANT.

REFORMA, CHIAPAS.





VILLA DE REYES, S.L.P.

CLIENT: CIV INGENIERÍA

# CIV ENGINEERING

**YEAR:**  
2017

**STRUCTURE:**  
170 TON



MONCLOVA, COAHUILA



# FENIX AHMSA

CLIENT: ICA FLUOR

Supply of materials, fabrication and transportation to the Bosnor yard of the jetty structure.

**DURATION:**  
15 MONTHS

**STRUCTURE:**  
17,000 TON

**TYPE OF STRUCTURE:**  
NAVES PLATE LINES,  
EXTRACTION HOOD



PESQUERÍA, N.L.

CLIENT: TERNIUM

**YEAR:**  
2016

**STRUCTURE:**  
540 TON

**TYPE OF STRUCTURE:**  
EXTENSION OF WAREHOUSE 5

# MANUFACTURING AND ASSEMBLY OF STRUCTURE

Workshop engineering, supply, fabrication  
and erection of steel structures.



MATA REDONDA, VER.

CLIENT: GRUPO R PETROLEO Y GAS

## PROTECTORS AND PLATFORM JETTIES

Supply of materials, fabrication and transportation of structure to Bosnor's jetty yard, type of structure: Fenders, jetty for offshore platforms.

**DURATION:**  
7 MONTHS

**STRUCTURE:**  
230 TON

**YEAR:**  
2019

MATA REDONDA, VER.



CLIENT: ICA FLUOR

## RACK MODULES

### BAYTOWN CHEMICALS EXPANSION

Supply, Fabrication, Transport and painting of weldable metal structure for TECNIMONT pipe rack.

**DURATION:**  
**24 MONTHS**

**STRUCTURE:**  
**2,100 TON**

**TYPE OF  
STRUCTURE:**  
**RACK  
MODULES**

**YEAR:**  
**2019**



CLIENT: MOTA ENGI

## BRIDGES URBAN HIGHWAY

SIERVO DE LA NACIÓN


Supply, manufacture, transport to site and erection of metallic structure for road crossing clearings.

**DURATION:**  
34 MONTHS

**STRUCTURE:**  
1,622 TON

**TYPE OF  
STRUCTURE:**  
MAIN BEAMS  
(BRIDGE  
STRUCTURE)

**YEAR:**  
2019



VALLEJO, CDMX

**CLIENTE: ICA STORK**

## **PLANT EXPANSION**

**PROCTER & GAMBLE**

Supply and fabrication of structure for Procter & Gamble project.

**DURATION:**  
**4 MONTHS**

**STRUCTURE:**  
**5 TON**

**TYPE OF  
STRUCTURE:**  
**MEZANINE**

**YEAR:**  
**2019**





# PIPING



CADEREYTA, N.L.

# NEW PLANT STRUCTURE

HÉCTOR LARA SOSA REFINERY

CLIENT: ICA FLUOR



**YEAR:**  
**2011**

**HEIGHT:**  
**110 M**







SONDA DE CAMPECHE

# PILES AND LOAD-BEARING COLUMNS

MARINE PLATFORM

CLIENT: IDINSA-PROYECTA

Manufacture of carbon steel pipe based on rolled plate.



**YEAR:**  
2019

**WEIGHT:**  
411 TON

**CODE:**  
API 2B



ALTAMIRA, TAMAULIPAS

CLIENT: PEMEX, PETROQUÍMICA

## PROCESS PIPING FOR MARINE PLATFORM CA-KU-A1

Process piping, Plies catchers for intermediate tripod, supports and coupling cones. 36" 1 1/2" pipe, 24" 1 1/4" pipe.

**YEAR:**  
2019

**WEIGHT:**  
322 TON DE  
SPOOL

**CODE:**  
API 2B







MATA REDONDA, VER.

---

# ICHALKIL AND POKOCH PLATFORMS

CLIENT: IDINSA

36" and 47" beams, deprotected main beams, platform bracing, pedestal crane, heliport, floor system, lower and upper deck, diesel tank. Structural steel, beam based on 3 plates of 47".

**YEAR:**  
2019

**WEIGHT:**  
1457 TON



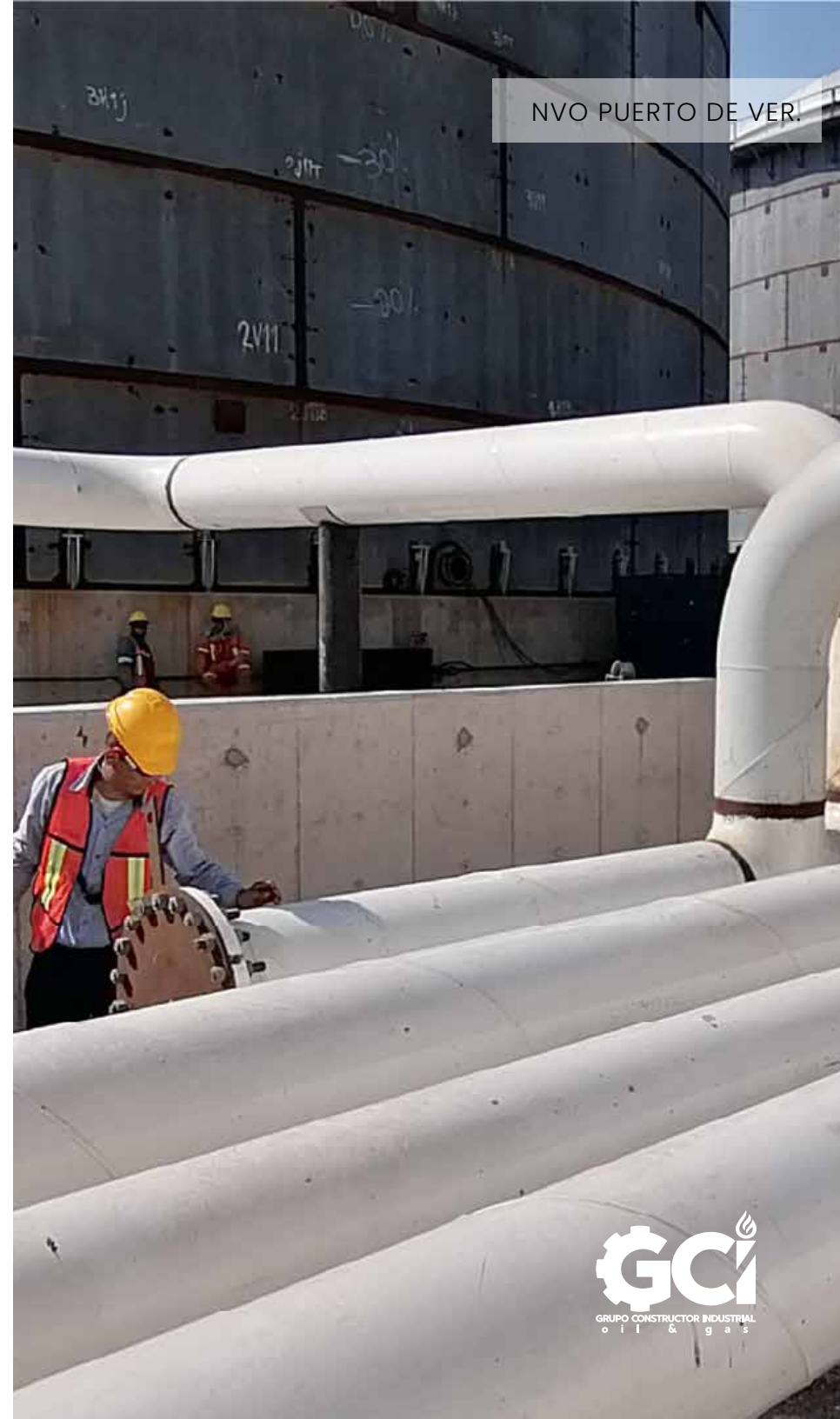
# OIL TERMINAL

CLIENT: GDI - IENOVA

- 22,849" Fire water service line.
- 25,284" of firefighting foam service line.
- Linear meters of rolled pipe (2 1/2", 3" and 6") 12,379.2 ml.
- 480 TON of galvanized piping / 3,000 m2 of painted piping.

**YEAR:**  
**2019**

**EXECUTION  
TIME:**  
**90 DAYS**





# CLEAN GASOLINE UNIT

TULA DE ALLENDE

CLIENT: ICA FLUOR

Prefabrication, anticorrosive coating, installation and testing of carbon, alloy and stainless steel pipes and supports.

Area 110, 120, 130 & 320, Miguel Hidalgo Refinery.



SALAMANCA, GTO.



CLIENT: KEMGIA

## COMPRESSION STATION

Detailed engineering of prefabricated piping, non-destructive testing and transport to site, detailed engineering, quantification of materials, sequence and welding map.





POZA RICA, VER.

# SEPARATION BATTERIES AND STORAGE AND PUMPING STATION

CHICONTEPEC I Y II

CLIENT: ICA FLUOR

Prefabrication and assembly of piping in different diameters and structure, hydrostatic testing, painting, railing assembly, shop engineering and separation batteries.

NARANJOS, VERACRUZ.

CLIENT: TECHINT

# COMPRESSION STATION

## NARANJOS

Prefabrication, coating and assembly of piping, fabrication of supports and assembly of equipment.

Valve installation and hydrostatic testing.





# SEPARATION BATTERIES AND STORAGE AND PUMPING STATIONS

CHICONTEPEC I Y II

CLIENT: ICA FLUOR

Prefabrication and assembly of piping in different diameters and structure, hydrostatic testing, painting, railing assembly, shop engineering and separation batteries.



CLIENT: SAIPEM

# COMPRESSION STATION

EL ENCINO

Mechanical work on high pressure natural gas piping.  
Application of welding and installation of piping of different diameters.

Assembly of structure for the aircooler area of different diameters.

Assembly of auxiliary equipment for the TCG-160 and TCG-161 turbines.





# CLEAN GASOLINE UNIT

SALAMANCA

CLIENT: UOP

Prefabrication, anticorrosive coating, installation and testing of carbon, alloy and stainless steel pipes and supports, area 110, 120, 130 & 200, Antonio M. Amor Refinery.



APASEO EL ALTO, GTO.

# COMPRESSION STATION

RAMONES

CLIENT: DRAGADOS OFFSHORE

Prefabrication, corrosion coating, installation and testing of carbon, alloy and stainless steel pipe and supports.

Area 110, 120, 130 & 320.



MINNESOTA, EE.UU

CLIENT: HAMON DELTAK

# DUCTOS PLANT

## FLINT HILLS

Shop engineering, supply and fabrication of pipelines: Duct A, Duct B, Duct Cw/ Perf Plates, Duct D. Duct Ew / AIG Grid.







# INDUSTRIAL MAINTENANCES



CD. MADERO, TAMPS.

CLIENT: PEMEX

# U502 HYDRODESULFURIZATION PLANT REHABILITATION

GRAL. FRANCISCO I. MADERO REFINERY

Opening and closing of man inlet, Conformation of internals and replacement of fittings, Fluidity tests, Maintenance of PSV valve and Alloy pipe replacement.





# U801 HYDROGEN PLANT REHABILITATION

GRAL. FRANCISCO I. MADERO REFINERY

J/C placement, disassembly of equipment, tube bundle removal, external and internal cleaning, assembly (assembly of spool, flat cover, hood, rear cover and floating cover) and hydrostatic tests.





CD. MADERO, TAMPS.

CLIENT: PEMEX

# MC LIGHT FRACTIONATING PLANT REHABILITATION

GRAL. FRANCISCO I. MADERO REFINERY

Placement of J/C, disassembly of equipment, tube bundle extraction (with extractor), cleaning and assembly.



MINATITLÁN, VER.

V-31010

# REHABILITATION OF COKER PLANT U31000

GRAL. LÁZARO CÁRDENAS REFINERY

CLIENT: PEMEX

Rehabilitation of vertical pump, repair of volute casing with welding and assembly with supply of mechanical seal, maintenance of motor fans, mechanical cleaning and high temperature coating.





# SULFUR PLANT REHABILITATION U23000

CLIENT: PEMEX

Refurbishment of static and dynamic equipment, instrumentation, electrical equipment, civil works, process lines, supply of materials and spare parts.





A



CLIENT: PEMEX

# CCR UNIT REHABILITATION

MINATITLAN REFINERY

Supply, prefabrication, on-site installation works for the modernization of the CCR unit.





# REHABILITATION, DISMANTLING AND CONSTRUCTION ON VISCOSITY REDUCER

MIGUEL HIDALGO REFINERY

CLIENT: PEMEX

Rehabilitation of the viscosity reduction plant and peripheral areas, including dismantling, procurement, construction, testing and start-up.



LAZARO CARDENAS, MICHOACAN.



CLIENT: FERTINAL

## FERTINAL FIREPLACE

Basic and detail engineering, supply, manufacture, transportation, assembly and disassembly of chimney.





# REHABILITATION AND CONSTRUCTION

BOCATOMA RIO MEZCALAPA

CLIENT: PEMEX

Basic and detail engineering, supply, manufacture, transportation, assembly and disassembly of chimney.





**CLIENT: PEMEX REFINACIÓN**

# REFINERY RECONFIGURATION

LAZARO CARDENAS DEL RIO

**TYPE OF  
STRUCTURE:  
COKER, AMINE,  
SULFUR AND  
CATALYTIC PLANT**

**STRUCTURE:  
20,000 TON**

**YEAR:  
2009**

**DURATION:  
3 años**





# POWER PLANTS





MINATITLAN, VERACRUZ.

CLIENT: DRAGADOS, ICA, MINATRICO, EBAMEX

# REFINERY RECONFIGURATION

## LAZARO CARDENAS REFINERY

Scope in a single project. Dragados Industriales, S.A..

Package III - 7,000 TONS

Ica Fluor R, de R.L. de C.V. Package II - 6,000 TONS

Mina-Trico S. de R.L. de C.V. Package IV - 7,000 TONS

Ebramex S. de R.L. de C.V. Package V - 5,000 TONS

**TOTAL STRUCTURE:**  
**25,000 TONS**





# COMBINED CYCLE POWER PLANT

EMPALME I


CLIENT: OHL

Piping racks, electrical building, power house, operating platforms.

**YEAR:**  
**2017**

**TONS:**  
**3,000**





REFORMA, CHIAPAS

CLIENT: UTE ABENER ABEINSA

# COGENERATION PLANT


NUEVO PEMEX TABASCO

Piping racks, electrical and mechanical workshop, operating platforms.

**YEAR:**  
**2012**

**TONS:**  
**960**





YECAPIXTLA, MORELOS

CLIENT: ABENER ABENGOA

# COMBINED CYCLE PLANT

MORELOS CENTER 264

Casa de máquinas, sala eléctrica, racks de tuberías, plataformas operativas.

**YEAR:**  
**2013**

**TONS:**  
**2,300**

BAJA CALIFORNIA SUR



**CCI 236**

BAJA CALIFORNIA SUR III

CLIENT: ACCIONA

Piping racks, control rooms, power house,  
electrical shop.

**YEAR:**  
**2009**

**TONS:**  
**850**





MOJAVE, CALIFORNIA. US

CLIENT: ABEINSA EPC

# CCI 236

BAJA CALIFORNIA SUR III

Pipe racks+, structure supports STG, Plant A & B.

**YEAR:**  
2012

**TONS:**  
1,600



AZUFRES, MICH

CLIENT: TKS CORPORATION

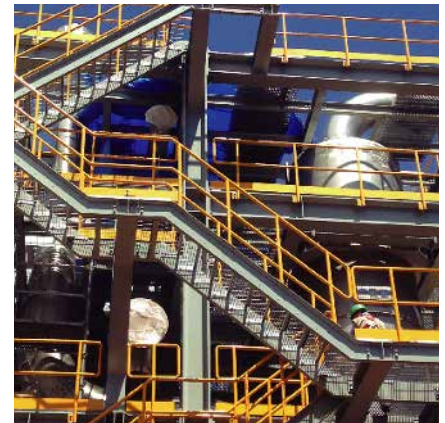
# LOS AZUFRES 327 Cg

LOS AZUFRES III FASE II 25 MW

**YEAR:**  
2019

**TONS:**  
372

**DURATION:**  
4 MONTHS







# BOILERS

# CB-05 BOILER

CLIENT: PEMEX REFINACIÓN

Manufacture of:

- Package boilers
- Industrial boilers type Bi-Drum
- HRSG recovery boilers
- Biomass burning boilers

**YEAR:**  
**2011**







# FIREPLACES

LAZARO CARDENAS, MICHOACÁN.



CLIENTE: FERTINAL

## FERTINAL FIREPLACE

**HEIGHT:**  
30 MTS

**MATERIAL:**  
SA-516-70

**DIAMETER:**  
4 MTS

**WEIGHT:**  
69,900 KG

**FABRICATION  
CODE:**  
AWWD

**YEAR:**  
2017



ROSARITO, BAJA CALIFORNIA SUR



# 229 CTTG

BAJA CALIFORNIA SUR III

CLIENT: ACCIONA

**EQUIPMENTS:**

**3**

**HEIGHT:**

**30 MTS**

**DIAMETER:**

**3.2 MTS**

**YEAR:**

**2017**



# OFFSHORE PLATFORMS





MATA REDONDA, VER

---

# AYATSIL PLATFORM

CLIENT: INDUSTRIAS DEL HIERRO

Shop engineering, supply and  
fabrication of super structure and  
miscellaneous.



MATA REDONDA, VER.



# TSIMIN PLATFORM

CLIENT: INDUSTRIAS DEL HIERRO

Shop engineering, supply and fabrication of structure and miscellaneous.







MATA REDONDA, VER.

# LANKAHUASA PLATFORM

CLIENT: INDUSTRIAS DEL HIERRO

Shop engineering, supply and fabrication of structure and miscellaneous.





MATA REDONDA, VER.



# MAY A PLATFORM

CLIENT: INDUSTRIAS DEL HIERRO

Supply and fabrication of metallic structure for sub levels and deck of MAY-A platform.



# MAY-B PLATFORM

CLIENT: INDUSTRIAS DEL HIERRO

Supply and fabrication of metallic structure for sub levels and deck of the MAY-B platform.



MATA REDONDA, VER.

CLIENT: INDUSTRIAS DEL HIERRO

## ZAAP-A PLATFORM

Engineering, procurement, construction, loading, mooring and transportation of a drilling platform called ZAAP-A.







MATA REDONDA, VER.

# CAYO ARCAS PLATFORM

CLIENT: INDUSTRIAS DEL HIERRO

Supply, fabrication, transport to site and erection of metal structure of the decks for the CAYO ARCAS housing platform project.



MATA REDONDA, VER.

CLIENT: INDUSTRIAS DEL HIERRO

## PLATAFORMA YAZCHÉ-A (ATTACHED)

Shop engineering, supply, fabrication, coating application, preparation of quality dossier, transportation to site and erection of metal structure for Yazché-A marine platform.





# AKAL • TI PLATFORM

CLIENT: INDUSTRIAS DEL HIERRO

Supply, outfitting, fabrication, galvanizing and erection of AKAL TI marine platforms.



MATA REDONDA, VER

CLIENT: INDUSTRIAS DEL HIERRO

## AKAL • TR PLATFORM

Supply, outfitting, fabrication and erection of AKGalvanizedL TR marine platforms.





COSTA FUERA, CD. DEL CARMEN.



# 12" AND 18" GAS PIPELINES

FOR OFFSHORE PLATFORM  
INTERCONNECTIONS

CLIENT: PEMEX

- MANIK-A/IXTAL
- B-BATAB-A/ONEL-A



# CA-KU-A1 PLATFORM

CLIENT: DRAGADOS OFFSHORE MÉXICO

Fabrication service of 3 plate beam, bottom deck and top deck, including fabrication, sand blast, priming and transportation to Domsa yard, Altamira.







# MODULES



PARAÍSO, TABASCO

# INTEGRATION RACK

“OLMECA” REFINERY

CLIENT: IDINSA-PROYECTA

Supply, manufacturing, coating application and structure assembly.



**STRUCTURE:**  
**10, 532 TON**

**EXECUTION  
PERIOD:**  
**10 MONTHS**

The impossible is the first step towards the **extraordinary**







PARAÍSO, TABASCO

CLIENT: IDINSA-PROYECTA

We worked with 0 accidents

# INTERCONNECTION BRIDGES

“OLMECA” REFINERY

Supply, manufacturing, coating application and assembly of metal structure.



**STRUCTURE:**  
**3,598.5 TON**

**EXECUTION PERIOD:**  
**4 MONTHS**



UNITED STATES



CLIENT: TECNIMONT

## TECNIMONT MODULES

Supply, manufacture, transport and painting of weldable metal structure for Tecnimont's Tubular Rack.

**20  
MODULES**

**STRUCTURE:  
2,112.24 TON**

**EXECUTION  
PERIOD:  
6 MONTHS**



# UOP MODULES

CLIENTE: UOP

Suministro, fabricación, transporte y pintura de estructura metálica soldable para el proyecto de 7 módulos de UOP.

**STRUCTURE:**  
**7,981.5 TON**

**EXECUTION  
PERIOD:**  
**10 MONTHS**

**INCHES:**  
**230,000 "D**





# SEPARATION COILS & COMPRESSOR STATIONS





CLIENT: ICA FLUOR



## SEPARATION BATTERY

### COAPECHACA I

Prefabrication in workshop of carbon steel pipe in different diameters and thicknesses for SPOOL of the gas systems, defocusing systems, air systems, service water systems, as well as the installation, installation and testing of the same.



# SEPARATION BATTERY

## COLD WATER

Prefabrication in workshop of carbon steel piping in different diameters and thicknesses for SPOOL of gas systems, defocusing systems, air systems, service water systems; as well as, on-site installation, installation and testing of the same.



# CHICONTEPEC I & II

CLIENT: ICA FLUOR

Prefabrication and assembly of piping in different diameters and structure, hydrostatic testing, painting, railing assembly, workshop engineering and separation batteries.

- Piping and structure fabrication and installation to crude oil storage tanks.
- Fabrication, installation, hydrostatic testing and radiographic inspections.
- Piping for gas, air and water systems.
- Piping for congenital water, fire and gas systems.
- Water, oil, dehydrated water, dehydrated water systems, vent structure.
- Fabrication, installation and hydrostatic tests.





# CÁRDENAS NORTE BATTERIES

Engineering, procurement, construction and start-up of the processes of separation, stabilization, dehydration and desalting of crude oil; treatment and injection of congenital water for the Cárdenas Norte Battery.





CLIENT: PEMEX REFINACIÓN

# RE-PUMPING STATION

DEGOLLADO

Construction of intermediate pumping station (Degollado) for the 16" diameter polyduct.

# EL ENCINO

CLIENT: FERMACA

Mechanical work on high pressure natural gas piping.

- Welding application and installation of piping of different diameters.
- Application of paint on piping.
- Assembly of structure for the aircooler area of different diameters.
- Assembly of auxiliary equipment for TCG-160 and TCG-161 turbines.







APASEO EL ATO, GTO.

# COMPRESSION STATION

RAMONES

CLIENT: ICA



Prefabrication, anticorrosive coating, installation and testing of carbon, alloy and stainless steel piping and supports, area 110, 120, 130 and 320, Miguel Hidalgo Refinery.

ASSEMBLY: Circuit I, II and III.

TROCK: Pipe welding Pipe assembly  
Mechanical Termination





CLIENT: TECHINT

# COMPRESSION STATION

NARANJOS

Prefabrication, application of coatings and pipe assembly, fabrication of supports and equipment assembly. Installation of valves and hydrostatic tests.

TESTING: Hydrostatic and buried piping.  
ASSEMBLY: of air cooler and painting of air cooler on piping.

TROCKING: Of flanges and works in workshop.







What started as a small subcontracting company has become a nationally recognized construction company that serves both national and international clients, prioritizing quality, meeting deadlines and working with human sense.

**Av. Revolución 303**  
**Pachuca de Soto, Hgo. C.P. 42060**  
**Contact: (+52) 773 154 65 60**  
**comercializacion@gpocoind.com.mx**  
**www.gpocoind.mx**